

**ROYAL
ADELAIDE
SHOW**



2024

COMPETITION CATALOGUE



MERINO SHEEP

31 AUGUST - 8 SEPTEMBER 2024 | theshow.com.au

ROYAL ADELAIDE SHOW

PREMIER PARTNERS



MAJOR PARTNERS

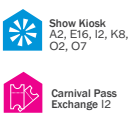
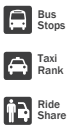
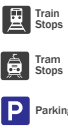


CORPORATE PARTNERS



MEDALLION PARTNERS





The remainder of the Showground, is **SMOKE FREE** including Vapourisers & E-cigarettes



- Carnival E4
- Kids' Carnival F15, K2, N2
- Dining & Catering Precincts
- Bars G8, G11, G14, M12, K8
- Vintage Machinery E12
- SA Water Stations B3, E16, G6, K8, N7

- Royal Show Museum F9
- Lost Property, Volunteers G9
- Cookery M6
- Handicrafts & Junior Textiles M4
- Junior Art, Craft & Art Prize N5
- Photography N5

- SACARE Changing Places Facility B4
- Accessible Viewing Platform G10
- Car Parking
- Cellar Door Experience D7
- Aggie's Farm E9
- Goyder Food & Wine N6

- SACARE Carers Lounge B6
- Roof Top Tour Meeting Point K8
- ATM H2, J6, M7
- First Aid C6, G13, L8
- Horticulture O4
- Nature Play Space N3

- Live Entertainment N5, D7
- Members Dining Room
- Lockers N7
- Toilets
- Accessible Toilets
- Parents Room E9, L3, M8

- Stroller & Wheelchair Hire F13
- Mobility Scooter Hire H2
- Parcel Minding F13
- Prayer Room L7
- Smoking Area P8, H16, B8, F14
- Police Station & Lost Children H8



ROYAL ADELAIDE SHOW

Competition Emergency Information

For your personal safety, the safety of others and the protection of your property please read and note the following information.

Work Health & Safety Policy Statement

The RA&HS aims to ensure, so far as is reasonably practicable, the safety of persons, property and livestock attending the Adelaide Showground.

The RA&HS will develop plans for emergency situations that may occur during the Royal Adelaide Show.

The RA&HS has a proactive WH&S program and encourages workers including staff, councillors, exhibitors, volunteers and public to report any incident or hazard. For assistance on any reporting, please contact a Sectional Supervisor or the Reception in the Secretary's Office.

Adelaide Showground Emergency Procedures

- **Call for help** – Notify anyone in the immediate vicinity to provide assistance
- **Dial 000** for Emergency Services and provide details of the emergency and your location
- **Call Venue Communication Centre – Emergency 8210 5219**
- Phone the RA&HS Switchboard – 8210 5211 or Extension 9 from an internal phone
- Provide any assistance you can, if safe to do so, until help arrives – Assist injured or people with disabilities
- **Fight the fire** only if it is safe to do so
- **Evacuate the area** if necessary – **DO NOT** re-enter the building or area
- Obey reasonable instructions from official personnel

Emergency Assembly Points for Animals

Horses, Dairy Cattle, Beef Cattle, Pigs, Goats & Alpacas – Main Arena via the nearest gate.

Sheep – Ramps placed at all doors and sheep shepherded to the Main Arena.

Farmyard Nursery & Learning Centre & Farm Expo

- Large animals to the Main Arena via nearest gate.
- Small animals to other Livestock pavilion via the nearest gate.

Dogs, Cats & other small animals – Evacuate the building via the safest route with owner or handler.



**ABC Radio
ADELAIDE**

Roll up! Roll up!

Enjoy the fun of the Show as ABC Radio Adelaide broadcasts live from the Jubilee Pavilion

Visit the ABC stage to meet your favourite presenters

Tune your radio to 891 AM, listen live [online](#), or download the [ABC listen app](#) for free

MERINO SHEEP CATALOGUE 2024

OFFICE BEARERS

PRESIDENT – AM HARDY
CHAIRMAN – HC FINDLAY
DEPUTY CHAIR – JVE GOSSE
TREASURER – MP SIEBERT

CHIEF EXECUTIVE

WM RAYNER

TRUSTEES

JE SCHUTZ
HC FINDLAY
RJ MCFARLANE
AM HARDY

PASTORAL COMMITTEE

S Nicholls (Chair)
L Hart
A Piggott
M Gale
T Donaldson
T Ashby
P Button
A Duncan
N Waldow
B Lush

2024 OFFICIALS

PRIME LAMB AND MATERNAL

Supervisor – Tim Donaldson
Asst Supervisor – Sid Nicholls

Microphone Steward – Peter Meyer
Administration Supervisor – Vanessa Anderson

Technical Reference Committee

Scott Dinha
Tim Donaldson
Sid Nicholls
Mark Brooks

MERINO

Open Strong Wool

Judge – Bruce Rollinson
Steward – Grant Johnson

Open Medium Wool

Judge – David Zouch
Steward – Nigel Gosse

Open Fine Wool (Merino and Poll)

Judge – Juan-Manuel Gonzalez
Steward – Mary Chirgwin Rowe

Fibre Meat Plus Wool

Wool

Judge – Greg Andrews
Steward – Sid Nicholls

Meat

Judge – Greg Andrews
Scanner – Ian Bradtke

Young Judges

Senior Section – Ian Koch
Junior Section – Wayne Fiebig

Schools' Merino Wether Competition

Wool Judge - Jarad Philips
Meat Judge - Luke Schrieber

Handlers Competition

Judge - Anthony Hurst

Stewards - David Rowett
James Vandeluer

Shearers - Glen Haines
Sportsshear

Most Professional School – Agricultural Teachers Association

Scanner – Rachael Chirgwin

MERINO SHEEP CATALOGUE 2024

POLL MERINO

Open Poll Strong Wool

Judge – Todd Mullan
Steward – Mark Brooks

Open Poll Medium Wool

Judge – Daniel Rodgers
Steward – Scott Dinham

Associate Judges

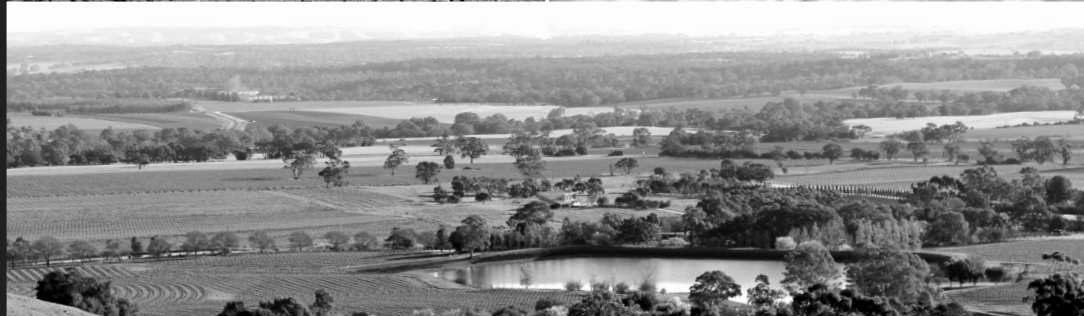
Sophie Ashby
Kasey Mullighan

Prime SAMM

Judge – Sam Edwards
Steward – Amanda Lock

MERINO SHEEP CATALOGUE 2024

Tuesday 3 September		
ARRIVAL – all Sheep	From 2pm – 8pm	
	From 2-4.30pm	Merino Wethers for Agricultural Schools Competition
Wednesday 4 September		
ARRIVAL – all sheep	Prior to 8am	
<u>Inspection & Transfers</u>	from 9.00am	
<u>Scanogram</u>	from 10am	All sheep requiring scanogramming
<u>Judging</u>	8.30 am	School Wether Competition (North Ring)
	1.00pm	Prime SAMM Judging (South Ring)
	1.00 pm	August Shorn Merino & Poll Merino (North & Main Ring)
<u>Presentation</u>	5.00 pm	Winners of School Wether Competition
Thursday 5 September		
<u>Arrival</u>	Prior to 8am	Sale Sheep ONLY - TBC
<u>Judging</u>	9.00 am	March Shorn Merino & Poll Merino
	9.00 am	Prime SAMM Young Judges Competition (South Ring)
	10.30 am	Merino Fleece Young Judges Championship. (North Ring)
	1.30 pm	Merino Sheep Young Judges Championship. (North Ring)
<u>Presentation</u>	5.00 pm	Merino & Poll Merino Fibre Meat Plus Class Presentation (judge to arrive at 10.00am)
	Following judging	Trophies followed by Wool Trophies
Friday 6 September		
<u>Arrival</u>	Prior to 8am	Sale Sheep ONLY
<u>Sale</u>	1.00 pm	Adelaide Stud Merino & Poll Merino Ram Sale
EXIT – All Sale Sheep		After the completion of the Sheep Sale Exit Permits will be provided by the Sheep Supervisor
Saturday 7 September		
		State Shearing Competition Finals
Sunday 8 September		
EXIT – Remaining Sheep		Exit Permits will be provided by the Sheep Supervisor



AWN is proud to sponsor the Royal Adelaide Show

For all your wool marketing needs, contact:

Rod Miller
State Manager
- SA
0428 256 495

Jared Phillips
Wool & Sheep Specialist
- Jamestown, SA
0427 747 461

Rob Williams
Wool & Sheep Specialist
- Naracoorte, SA
0448 484 176



awn.net

25
YEARS



MERINO SHEEP CATALOGUE 2024

MERINO AND POLL MERINO – CHAMPION AWARDS

**THE ELDERS ELANCO PRIZE
NATIONAL SUPREME CHAMPION
MARCH SHORN MERINO OR POLL
MERINO EXHIBIT**

\$8,000 sponsored by **Elders Elanco**

**THE MAGNUS AUSTRALIA PRIZE
BEST MERINO OR POLL MERINO
EXHIBIT OF THE SHOW**

Including March Shorn.
Product (\$3,000) 18 bag sheep feeder
sponsored by **Magnus Australia Pty Ltd**

**THE MGA INSURANCE TROPHY
GRAND CHAMPION MARCH SHORN
MERINO EWE**

Trophy sponsored by **MGA Insurance
Brokers Pty Ltd**

**THE RURAL BANK PRIZE
SUPREME CHAMPION AUGUST SHORN
MERINO OR POLL MERINO EXHIBIT**

\$2,000 sponsored by **Rural Bank**

**RESERVE GRAND CHAMPION MARCH
SHORN MERINO EWE**

**THE MGA INSURANCE TROPHY
GRAND CHAMPION MARCH SHORN
MERINO RAM**

Trophy sponsored by **MGA Insurance
Brokers Pty Ltd**

**RESERVE GRAND CHAMPION MARCH
SHORN MERINO RAM**

**THE MGA INSURANCE TROPHY
GRAND CHAMPION MARCH SHORN
POLL MERINO EWE**

Trophy sponsored by **MGA Insurance
Brokers Pty Ltd**

**RESERVE GRAND CHAMPION MARCH
SHORN POLL MERINO EWE**

**THE MGA INSURANCE TROPHY
GRAND CHAMPION MARCH SHORN
POLL MERINO RAM**

Trophy sponsored by **MGA Insurance
Brokers Pty Ltd**

**RESERVE GRAND CHAMPION MARCH
SHORN POLL MERINO RAM**

**THE NL FIEBIG & SONS PRIZE
GRAND CHAMPION AUGUST SHORN
MERINO EWE**

\$100 sponsored by **NL Fiebig & Sons**

**RESERVE GRAND CHAMPION AUGUST
SHORN MERINO EWE**

**THE ELDERS PRIZE and
THE STOCK JOURNAL PUBLISHERS
PRIZE**

**GRAND CHAMPION AUGUST SHORN
MERINO RAM**

\$150 sponsored by **Stock Journal
Publishers Pty Ltd**

Voucher (\$200) sponsored by **Elders
Limited**

Voucher (\$200) sponsored by **Stock
Journal Publishers Pty Ltd**

**THE ELDERS PRIZE
RESERVE GRAND CHAMPION AUGUST
SHORN MERINO RAM**

Voucher (\$50) sponsored by **Elders Limited**

**THE FRESH PHOTO IMAGE PRIZE
GRAND CHAMPION AUGUST SHORN
POLL MERINO EWE**

Voucher (\$750) sponsored by **Fresh Photo
Image**

**RESERVE GRAND CHAMPION AUGUST
SHORN POLL MERINO EWE**

**THE ELDERS PRIZE and
THE FRESH PHOTO IMAGE PRIZE and
THE T E ASHBY MEMORIAL PRIZE**

**GRAND CHAMPION AUGUST SHORN
POLL MERINO RAM**

\$100 sponsored by **MC Ashby & Co**
Voucher (\$200) sponsored by **Elders**

Limited

Voucher (\$750) sponsored by **Fresh Photo
Image**

**THE ELDERS PRIZE
RESERVE GRAND CHAMPION AUGUST
SHORN POLL MERINO RAM**

Voucher (\$50) sponsored by **Elders Limited**

MERINO SHEEP CATALOGUE 2024

JUNIOR CHAMPION AUGUST SHORN MERINO OR POLL MERINO EWE

**THE NL FIEBIG & SONS PRIZE
JUNIOR CHAMPION AUGUST SHORN
MERINO OR POLL MERINO RAM**
\$100 sponsored by **NL Fiebig & Sons**

**THE ELDERS PRIZE and
THE SOUTH AUSTRALIAN STUD MERINO
SHEEPBREEDERS' ASSOCIATION PRIZE
MOST SUCCESSFUL EXHIBITOR IN POLL
MERINO MARCH SHORN AND AUGUST
SHORN CLASSES**
\$100 sponsored by **SA Stud Merino
Sheepbreeders' Association**
Voucher (\$100) sponsored by **Elders
Limited**

**THE STOCK JOURNAL PUBLISHERS'
TROPHY
MOST SUCCESSFUL MERINO AND POLL
MERINO EXHIBITOR IN AUGUST SHORN
CLASSES**
Points to be allotted as per August Shorn
classes.
Prizes obtained in Championship Awards do
not count in determining the aggregate.
Points will not count in any class unless
there are three or more exhibitors.
If an exhibitor has both Merino and Poll
Merino entered, they shall be treated as
individual exhibitors in each breed in
determining this award.
\$350 sponsored by **Stock Journal
Publishers Pty Ltd**
Trophy sponsored by **Stock Journal
Publishers Pty Ltd**
Voucher (\$350) sponsored by **Stock
Journal Publishers Pty Ltd**

**THE ELDERS PRIZE and
THE SOUTH AUSTRALIAN STUD MERINO
SHEEPBREEDERS' ASSOCIATION PRIZE
MOST SUCCESSFUL EXHIBITOR IN
MERINO MARCH SHORN AND AUGUST
SHORN CLASSES**
\$100 sponsored by **SA Stud Merino
Sheepbreeders' Association**
Voucher (\$100) sponsored by **Elders
Limited**

THE RON COLLINS MEMORIAL PRIZE MOST SUCCESSFUL EXHIBITOR IN MERINO AND POLL MERINO MARCH SHORN AND AUGUST SHORN CLASSES

Prizes obtained in Championship Awards do
not count in determining the aggregate for
this award.

Eligible classes include Group Classes and
the Fibre Meat Plus class.

Classes with less than two exhibitors will not
count towards this award.

\$500 sponsored by **Virginia Hawker**

MERINO RAM YOUNG JUDGES COMPETITION

To be conducted on Thursday 6 September
from 1.30 pm.

Please refer to the Young Judges
Championship Prize Schedule.

THE MURRAY K ALLEN MERINO SHEEP YOUNG JUDGES COMPETITION

To be conducted on Thursday 5 September
from 1.30 pm.

Please refer to the Young Judges
Championship Prize Schedule.



DO

BETTER

Visit the Brandt team at the
2024 Adelaide Show.
Located in the **Golden
Grains Pavillion.**

WITH

brandt.ca/au
1800 237 887



/// Brandt

MERINO SHEEP CATALOGUE 2024

**Class 253 THE MAX RAYNER
MEMORIAL PRIZES THE MAX
RAYNER STUD MERINO
JUNIOR HANDLER
ENCOURAGEMENT AWARD**

This award has been created in honour of the late Max Rayner. The purpose of the award is to assess the skills and conduct of young industry participants during the Royal Adelaide Show. It will be judged by a panel of members of Merinosa from Junior Handlers under the age of 25 years on 1 September of the current year. No entry fee.

First: \$150; Second: \$100;
Third: \$50
\$300 sponsored by **SA Stud
Merino Sheepbreeders'
Association**

768 Collinsville

**MERINO AND POLL MERINO - GROUP
CLASSES**

Class 254 Group of Merino Sheep.

To comprise three rams and two ewes, any age.
Bred by the exhibitor, from one stud.
Animals to be drawn from August Shorn classes.
To be judged with due regard to type and uniformity necessary in breeding.
Sheep comprising the exhibit need not necessarily have the same strength wool.

**Class 255 THE FRESH PHOTO IMAGE
PRIZE Two Merino or Poll
Merino Rams.**

Sheep need not necessarily have the same strength of wool. Not to be judged as a pair.
Bred by the exhibitor from one stud.
Animals to be drawn from August Shorn classes.
First: Voucher (\$750) sponsored by **Fresh Photo Image**

769 North Ashrose
770 Mulloorie
771 Glendonald Merino Stud
772 Tamaleuca
773 Collinsville

**Class 256 THE LEHMANN TROPHY
Group of Poll Merino Sheep.**

To comprise three rams and two ewes, any age.
Sheep need not necessarily carry the same count of wool.
Bred by the exhibitor, from one stud.
Animals to be drawn from August Shorn classes.

Trophy sponsored by **Ted
Lehmann**

774 North Ashrose
775 Mulloorie
776 Tamaleuca
777 Orrie Cowie
778 Collinsville

**Class 257 THE WHITE RIVER
BREEDERS GROUP PRIZE
Breeders Group.**

To comprise one ram and two ewes, under 1½ years.
Animals to be drawn from March shorn classes.
To be judged for standard and uniformity of type, not necessarily of the same wool count.
Bred by the exhibitor from one stud.

MERINO SHEEP CATALOGUE 2024

\$150 sponsored by **White River Merino Stud**

779 North Ashrose
 780 Nyowee Poll Merino Stud
 781 Terrick West
 782 Mulloorie
 783 Glendonald Merino Stud
 784 Orrie Cowie

Class 258 THE WHITE RIVER PRIZE Merino or Poll Merino March Shorn Group.

To comprise three rams and two ewes to be under 1½ years and exhibiting no more than two teeth.

Animals to be drawn from the March Shorn classes.

Bred by the exhibitor, from one stud.

To be judged with due regard to type and uniformity necessary in breeding. Sheep comprising the exhibit need not necessarily have the same strength wool.

\$250 sponsored by **White River Merino Stud**

785 North Ashrose
 786 Nyowee Poll Merino Stud
 787 Mulloorie
 788 Glendonald Merino Stud
 789 Orrie Cowie

Class 259 THE MURRAY K ALLEN MEMORIAL TROPHY Merino or Poll Merino March Shorn Pair.

To comprise one ram and one ewe.

Bred by the exhibitor from one stud.

Animals to be drawn from the March Shorn classes.

First: Trophy sponsored by **SA Stud Merino Sheepbreeders' Association**

790 North Ashrose
 791 North Ashrose
 792 Nyowee Poll Merino Stud
 793 Terrick West
 794 Mulloorie

795 Koehler E C & L N & Sons
 796 Belbourie Merino and Poll Merino
 797 Glendonald Merino Stud
 798 Glendonald Merino Stud
 799 Glendonald Merino Stud
 800 Orrie Cowie
 801 Orrie Cowie

Class 260 THE WAL HENNESSY MEMORIAL PRIZE Pair of Merino or Poll Merino March shorn Rams.

Bred by the exhibitor from one stud.

Animals to be drawn from the March shorn classes.

\$250 sponsored by **Paddy and Helen Handbury**

802 Kamora Park Poll Merino Stud
 803 North Ashrose
 804 Nyowee Poll Merino Stud
 805 Greenfields Karalee
 806 Belbourie Merino and Poll Merino
 807 Glendonald Merino Stud
 808 Tamaleuca
 809 Orrie Cowie
 810 Collinsville
 811 Poll Bonoko
 812 Brimanna Poll Merino Stud

THE ELDERS PRIZE and THE STOCK JOURNAL PUBLISHERS PRIZE SUPREME MERINO OR POLL MERINO GROUP

To be selected from winners in group classes

\$150 sponsored by **Stock Journal Publishers Pty Ltd**
 Voucher (\$200) sponsored by **Elders Limited**

Voucher (\$200) sponsored by **Stock Journal Publishers Pty Ltd**

Coca-Cola®

**PROUD SPONSORS OF
THE ROYAL ADELAIDE SHOW**



MERINO SHEEP CATALOGUE 2024

MERINO MARCH SHORN

MERINO STRONG WOOL CLASSES

Class 261 Strong wool ewe, under 1½ years with no more than two teeth.

813 North Ashrose

814 Mulloorie

815 Glendonald Merino Stud

Class 262 Strong wool ewe, over 1½ years and under 2½ years with four teeth and over.

Class 255 THE FRESH PHOTO IMAGE PRIZE Two Merino or Poll Merino Rams.

Sheep need not necessarily have the same strength of wool. Not to be judged as a pair. Bred by the exhibitor from one stud.

Animals to be drawn from August Shorn classes.

First: Voucher (\$750) sponsored by **Fresh Photo Image**

769 North Ashrose

770 Mulloorie

771 Glendonald Merino Stud

772 Tamaleuca

773 Collinsville

Class 256 THE LEHMANN TROPHY Group of Poll Merino Sheep.

To comprise three rams and two ewes, any age.

Sheep need not necessarily carry the same count of wool.

Bred by the exhibitor, from one stud.

Animals to be drawn from August Shorn classes.

Trophy sponsored by **Ted Lehmann**

774 North Ashrose

775 Mulloorie

776 Tamaleuca

777 Orrie Cowie

778 Collinsville

CHAMPION STRONG WOOL MARCH SHORN MERINO EWE

RESERVE CHAMPION STRONG WOOL MARCH SHORN MERINO EWE

Class 263 Strong wool ram, under 1½ years with no more than two teeth.

816 IJ & FL Koch

817 North Ashrose

818 Greenfields

819 Greenfields

820 Glendonald Merino Stud

821 Glendonald Merino Stud

Class 264 Strong wool ram, over 1½ years and under 2½ years with four teeth and over.

THE ALLPHASE ELECTRICAL PRIZE CHAMPION STRONG WOOL MARCH SHORN MERINO RAM

\$100 sponsored by Allphase Electrical

RESERVE CHAMPION STRONG WOOL MARCH SHORN MERINO RAM

MERINO SHEEP CATALOGUE 2024

MERINO MEDIUM WOOL CLASSES

Class 265 Medium wool ewe, under 1½ years with no more than two teeth.

822 North Ashrose
823 Mulloorie
824 Glendonald Merino Stud

Class 266 Medium wool ewe, over 1½ years and under 2½ years with four teeth and over.

CHAMPION MEDIUM WOOL MARCH SHORN MERINO EWE

RESERVE CHAMPION MEDIUM WOOL MARCH SHORN MERINO EWE

Class 267 Medium wool ram, under 1½ years with no more than two teeth.

825 IJ & FL Koch
826 North Ashrose
827 Greenfields
828 Mulloorie
829 Glendonald Merino Stud
830 Collinsville
831 Wanganella Merino Stud

Class 268 Medium wool ram, over 1½ years and under 2½ years with four teeth and over.

CHAMPION MEDIUM WOOL MARCH SHORN MERINO RAM

RESERVE CHAMPION MEDIUM WOOL MARCH SHORN MERINO RAM

MERINO FINE WOOL CLASSES

Class 269 Fine wool ewe, under 1½ years with no more than two teeth.

832 North Ashrose
833 Glendonald Merino Stud

Class 270 Fine wool ewe, over 1½ years and under 2½ years with four teeth and over.

CHAMPION FINE WOOL MARCH SHORN MERINO EWE

RESERVE CHAMPION FINE WOOL MARCH SHORN MERINO EWE

Class 271 Fine wool ram, under 1½ years with no more than two teeth.

834 North Ashrose
835 Greenfields
836 Glendonald Merino Stud

Class 272 Fine wool ram, over 1½ years and under 2½ years with four teeth and over.

837 Orrie Cowie

CHAMPION FINE WOOL MARCH SHORN MERINO RAM

RESERVE CHAMPION FINE WOOL MARCH SHORN MERINO RAM

MERINO AUGUST SHORN

MERINO STRONG WOOL CLASSES

Class 273 Strong wool ewe, under 1 ½ years with no more than 2 teeth.

FAMILY BREWED SINCE 1862

Get the Coors DrinkWise.org.au



FOREVER ORIGINAL SINCE 1862.



Coopers



NO ADDITIVES OR PRESERVATIVES EVER

AUSTRALIAN MADE AND OWNED

MERINO SHEEP CATALOGUE 2024

Class 274 Strong wool ewe, over 1 ½ years and under 2 ½ years with 4 teeth and over.

- 838 NL Fiebig & Sons
- 839 Greenfields
- 840 Orrie Cowie

**THE ELDERS PRIZE
CHAMPION STRONG WOOL AUGUST
SHORN MERINO EWE**

Voucher (\$50) sponsored by Elders Limited

**RESERVE CHAMPION STRONG WOOL
AUGUST SHORN MERINO EWE**

Class 275 Strong wool ram, under 1 ½ years with no more than 2 teeth.

Class 276 Strong wool ram, over 1 ½ years and under 2 ½ years with 4 teeth and over.

- 841 Mulloorie
- 842 Glendonald Merino Stud

**CHAMPION STRONG WOOL AUGUST
SHORN MERINO RAM**

**RESERVE CHAMPION STRONG WOOL
AUGUST SHORN MERINO RAM**

MERINO MEDIUM WOOL CLASSES

Class 277 Medium wool ewe, under 1 ½ years with no more than 2 teeth.

Class 278 Medium wool ewe, over 1 ½ years and under 2 ½ years with 4 teeth and over.

- 843 NL Fiebig & Sons
- 844 Greenfields
- 845 Koehler E C & L N & Sons
- 846 Collinsville

**CHAMPION MEDIUM WOOL AUGUST
SHORN MERINO EWE**

**RESERVE CHAMPION MEDIUM WOOL
AUGUST SHORN MERINO EWE**

Class 279 Medium wool ram, under 1 ½ years with no more than 2 teeth.

Class 280 Medium wool ram, over 1 ½ years and under 2 ½ years with 4 teeth and over.

- 847 Mulloorie
- 848 Glendonald Merino Stud
- 849 Collinsville

**THE SOUTH AUSTRALIAN STUD MERINO
SHEEPBREEDERS' ASSOCIATION PRIZE
CHAMPION MEDIUM WOOL AUGUST
SHORN MERINO RAM**

\$100 sponsored by SA Stud Merino
Sheepbreeders' Association

**RESERVE CHAMPION MEDIUM WOOL
AUGUST SHORN MERINO RAM**

MERINO FINE WOOL CLASSES

Class 281 Fine wool ewe, under 1 ½ years with no more than 2 teeth.

- 850 NL Fiebig & Sons

MERINO SHEEP CATALOGUE 2024

Class 282 Fine wool ewe, over 1 ½ years and under 2 ½ years with 4 teeth and over.

851 NL Fiebig & Sons

THE ELDERS PRIZE CHAMPION FINE WOOL AUGUST SHORN MERINO EWE

Voucher (\$50) sponsored by **Elders Limited**

RESERVE CHAMPION FINE WOOL AUGUST SHORN MERINO EWE

Class 283 Fine wool ram, under 1 ½ years with no more than 2 teeth.

Class 284 Fine wool ram, over 1 ½ years and under 2 ½ years with 4 teeth and over.

852 NL Fiebig & Sons

853 Glendonald Merino Stud

THE SOUTH AUSTRALIAN STUD MERINO SHEEPBREEDERS' ASSOCIATION PRIZE CHAMPION FINE WOOL AUGUST SHORN MERINO RAM

\$100 sponsored by **SA Stud Merino Sheepbreeders' Association**

RESERVE CHAMPION FINE WOOL AUGUST SHORN MERINO RAM

POLL MERINO MARCH SHORN

POLL MERINO STRONG WOOL CLASSES

Class 285 Strong wool ewe, under 1 ½ years, with no more than two teeth.

854 Carcuma North
855 North Ashrose
856 Nyowee Poll Merino Stud
857 Mulloorie
858 Mulloorie
859 Koehler E C & L N & Sons
860 Belbourie Merino and Poll Merino
861 Tamaleuca
862 Orrie Cowie

Class 286 Strong wool ewe, over 1 ½ years and under 2 ½ years, with four teeth and over.

863 Tamaleuca

THE ELDERS PRIZE CHAMPION STRONG WOOL MARCH SHORN POLL MERINO EWE

Voucher (\$50) sponsored by **Elders Limited**

RESERVE CHAMPION STRONG WOOL MARCH SHORN POLL MERINO EWE

Class 287 Strong wool ram, under 1 ½ years, with no more than two teeth.

865 Kamora Park Poll Merino Stud
866 Kamora Park Poll Merino Stud
867 Kamora Park Poll Merino Stud
868 IJ & FL Koch
869 IJ & FL Koch
870 North Ashrose
871 Nyowee Poll Merino Stud
872 Nyowee Poll Merino Stud
873 Greenfields
874 Greenfields
875 Mulloorie
876 Mulloorie
877 Mulloorie
878 Greenfields Karalee
879 Greenfields Karalee
880 Greenfields Karalee
881 Greenfields Karalee
882 Koehler E C & L N & Sons
883 Belbourie Merino and Poll Merino

MERINO SHEEP CATALOGUE 2024

884	Belbourie Merino and Poll Merino
885	Tamaleuca
886	Tamaleuca
887	Orrie Cowie
888	Orrie Cowie
889	Collinsville
890	Collinsville
891	Poll Bonoke
892	Poll Bonoke
893	Brimanna Poll Merino Stud

Class 288 Strong wool ram, over 1½ years and under 2½ years, with four teeth and over.

894	Koehler E C & L N & Sons
895	Orrie Cowie
896	Collinsville
897	Poll Bonoke
898	Flairdale Poll Merinos

THE ELDERS PRIZE CHAMPION STRONG WOOL MARCH SHORN POLL MERINO RAM

Voucher (\$50) sponsored by **Elders Limited**

RESERVE CHAMPION STRONG WOOL MARCH SHORN POLL MERINO RAM

POLL MERINO MEDIUM WOOL CLASSES

Class 289 Medium wool ewe, under 1½ years, with no more than two teeth.

899	Carcuma North
900	Carcuma North
901	North Ashrose
902	Nywee Poll Merino Stud
903	Terrick West
904	Terrick West
905	Mulloorie
906	Koehler E C & L N & Sons
907	Belbourie Merino and Poll Merino
908	Belbourie Merino and Poll Merino
909	Glendonald Merino Stud
910	Orrie Cowie
911	Orrie Cowie

Class 290 Medium wool ewe, over 1½ years and under 2½ years, with four teeth and over.

912	Carricowie
913	Tamaleuca

THE ELDERS PRIZE CHAMPION MEDIUM WOOL MARCH SHORN POLL MERINO EWE

Voucher (\$50) sponsored by **Elders Limited**

RESERVE CHAMPION MEDIUM WOOL MARCH SHORN POLL MERINO EWE

Class 291 Medium wool ram, under 1½ years, with no more than two teeth.

915	Kamora Park Poll Merino Stud
916	Kamora Park Poll Merino Stud
917	Kamora Park Poll Merino Stud
918	Kamora Park Poll Merino Stud
919	IJ & FL Koch
920	North Ashrose
921	North Ashrose
922	Nywee Poll Merino Stud
923	Nywee Poll Merino Stud
924	Greenfields
925	Terrick West
926	Terrick West
927	Greenfields Karalee
928	Greenfields Karalee
929	Greenfields Karalee
930	Koehler E C & L N & Sons
931	Koehler E C & L N & Sons
932	Belbourie Merino and Poll Merino
933	Belbourie Merino and Poll Merino
934	Carricowie
935	Carricowie
936	Tamaleuca
937	Tamaleuca
938	Orrie Cowie
939	Orrie Cowie
940	Mills & Horne - Morley Poll Merino Stud
941	Collinsville
942	Collinsville
943	Poll Bonoke
944	Poll Bonoke
945	Brimanna Poll Merino Stud
946	Brimanna Poll Merino Stud

Class 292 Medium wool ram, over 1½ years and under 2½ years, with four teeth and over.

947	Carcuma North
948	North Ashrose
949	Nywee Poll Merino Stud
950	Terrick West

MERINO SHEEP CATALOGUE 2024

951	Mulloorie
952	Mulloorie
953	Mulloorie
954	Koehler E C & L N & Sons
955	Flairdale Poll Merinos

THE ELDERS PRIZE

CHAMPION MEDIUM WOOL MARCH

SHORN POLL MERINO RAM

Voucher (\$50) sponsored by **Elders Limited**

RESERVE CHAMPION MEDIUM WOOL

MARCH SHORN POLL MERINO RAM

POLL MERINO FINE WOOL CLASSES

Class 293 Fine wool ewe, under 1½ years, with no more than two teeth.

956	Carcuma North
957	Carcuma North
958	North Ashrose
959	Terrick West
960	Terrick West
961	Mulloorie
962	Belbourie Merino and Poll Merino
963	Carricowie
964	Orrie Cowie
965	Orrie Cowie
966	Mills & Horne - Morley Poll Merino Stud

Class 294 Fine wool ewe, over 1½ years and under 2½ years, with four teeth and over.

967	Carricowie
-----	------------

THE ELDERS PRIZE

CHAMPION FINE WOOL MARCH SHORN

POLL MERINO EWE

Voucher (\$50) sponsored by **Elders Limited**

RESERVE CHAMPION FINE WOOL

MARCH SHORN POLL MERINO EWE

Class 295 Fine wool ram, under 1½ years, with no more than two teeth.

969	Kamora Park Poll Merino Stud
970	Kamora Park Poll Merino Stud
971	Kamora Park Poll Merino Stud

972	IJ & FL Koch
973	North Ashrose
974	Nyowee Poll Merino Stud
975	Terrick West
976	Terrick West
977	Mulloorie
978	Greenfields Karalee
979	Belbourie Merino and Poll Merino
980	Carricowie
981	Glendonald Merino Stud
982	Tamaleuca
983	Orrie Cowie
984	Orrie Cowie
985	Mills & Horne - Morley Poll Merino Stud
986	Collinsville
987	Brimanna Poll Merino Stud

Class 296 Fine wool ram, over 1½ years and under 2½ years, with four teeth and over.

988	Terrick West
989	Collinsville

THE ELDERS PRIZE

CHAMPION FINE WOOL MARCH SHORN

POLL MERINO RAM

Voucher (\$50) sponsored by **Elders Limited**

RESERVE CHAMPION FINE WOOL MARCH SHORN POLL MERINO RAM

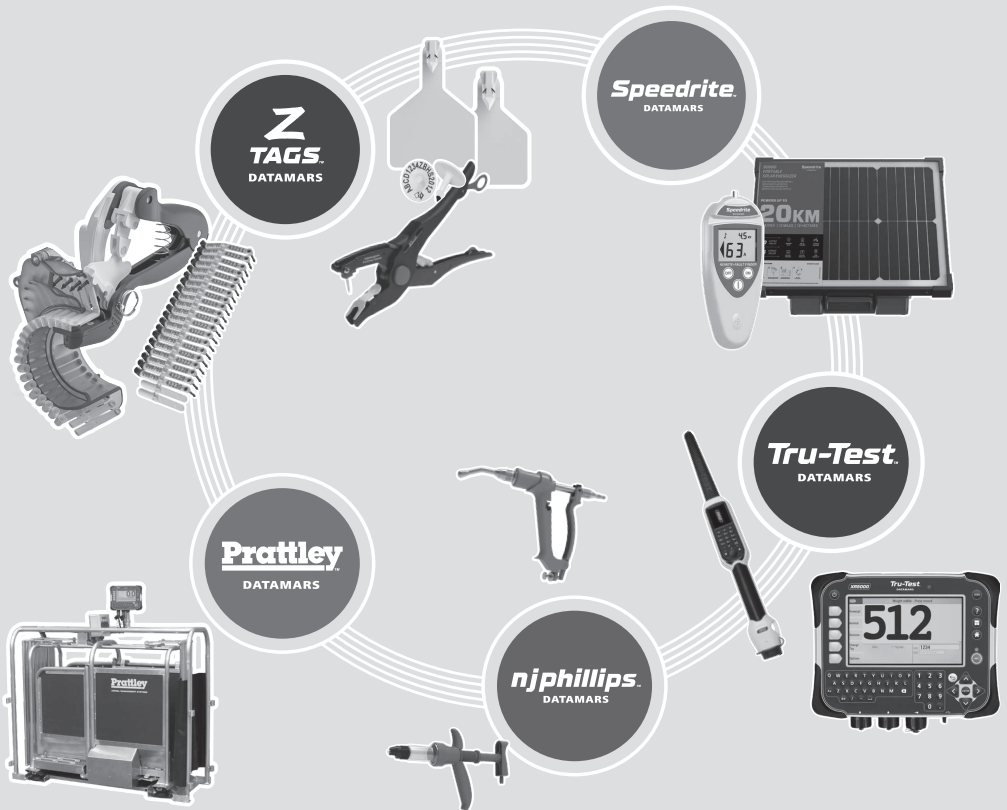
POLL MERINO AUGUST SHORN

POLL MERINO STRONG WOOL CLASSES

Class 297 Strong wool ewe, under 1½ years with no more than 2 teeth.

Your instincts, our intel

From identification and data collection to automated livestock management systems, you can rely on Datamars Livestock brands to offer the best in quality, accuracy, and reliability. Our products work with each other, but most importantly, they work with you.



**Let's
Talk**

James Ellis
0409 229 368

james.ellis@datamars.com

Southern SA



Tristan Edwards
0447 711 445

tristan.edwards@datamars.com

Northern SA & NT



MERINO SHEEP CATALOGUE 2024

Class 298 Strong wool ewe, over 1 ½ years and under 2 ½ years with 4 teeth and over.

990	NL Fiebig & Sons
991	Nyowee Poll Merino Stud
992	Greenfields
993	Mulloorie
994	Koehler E C & L N & Sons
995	Koehler E C & L N & Sons
996	Tamaleuca
997	Tamaleuca
998	Orrie Cowie
999	Collinsville

THE RHODES WOOL TROPHY CHAMPION STRONG WOOL AUGUST SHORN POLL MERINO EWE

Trophy sponsored by **Rhodes Wool**

RESERVE CHAMPION STRONG WOOL AUGUST SHORN POLL MERINO EWE

Class 299 Strong wool ram, under 1 ½ years with no more than 2 teeth.

Class 300 Strong wool ram, over 1 ½ years and under 2 ½ years with 4 teeth and over.

1000	Mulloorie
1001	Mulloorie
1002	Tamaleuca
1003	Orrie Cowie
1004	Orrie Cowie
1005	Collinsville

THE ELDERS PRIZE CHAMPION STRONG WOOL AUGUST SHORN POLL MERINO RAM

Voucher (\$50) sponsored by **Elders Limited**

RESERVE CHAMPION STRONG WOOL AUGUST SHORN POLL MERINO RAM

POLL MERINO MEDIUM WOOL CLASSES

Class 301 Medium wool ewe, under 1 ½ years with no more than 2 teeth.

1006	NL Fiebig & Sons
1007	Koehler E C & L N & Sons
1008	Mills & Horne - Morley Poll Merino Stud

Class 302 Medium wool ewe, over 1 ½ years and under 2 ½ years with 4 teeth and over.

1009	North Ashrose
1010	Nyowee Poll Merino Stud
1011	Mulloorie
1012	Koehler E C & L N & Sons
1013	Koehler E C & L N & Sons
1014	Tamaleuca
1015	Tamaleuca
1016	Orrie Cowie
1017	Collinsville

THE ELDERS PRIZE CHAMPION MEDIUM WOOL AUGUST SHORN POLL MERINO EWE

Voucher (\$50) sponsored by **Elders Limited**

RESERVE CHAMPION MEDIUM WOOL AUGUST SHORN POLL MERINO EWE

Class 303 Medium wool ram, under 1 ½ years with no more than 2 teeth.

1018	NL Fiebig & Sons
------	------------------

Class 304 Medium wool ram, over 1 ½ years and under 2 ½ years with 4 teeth and over.

1019	North Ashrose
1020	North Ashrose
1021	Nyowee Poll Merino Stud
1022	Mulloorie
1023	Mulloorie
1024	Koehler E C & L N & Sons
1025	Tamaleuca
1026	Tamaleuca
1027	Orrie Cowie
1028	Collinsville
1029	Collinsville



FOR ALL STAGES OF YOUR LIVESTOCK BUSINESS

We're here to assist you throughout all stages of production to maximise your sheep and lamb enterprise.

For 185 years Elders has been embedded in the fabric of Australian agriculture and are dedicated to continuing this legacy through our extensive network and by paving the way toward a bright future for agriculture.

To improve the performance and production of your stock, speak to your local Elders agent today.

elders.com.au/livestock

Elders

185 EST.
1839

MERINO SHEEP CATALOGUE 2024

**THE ELDERS PRIZE
CHAMPION MEDIUM WOOL AUGUST
SHORN POLL MERINO RAM**
Voucher (\$50) sponsored by **Elders Limited**

**RESERVE CHAMPION MEDIUM WOOL
AUGUST SHORN POLL MERINO RAM**

POLL MERINO FINE WOOL CLASSES

Class 305 Fine wool ewe, under 1 ½ years with no more than 2 teeth.

Class 306 Fine wool ewe, over 1 ½ years and under 2 ½ years with 4 teeth and over.

1030 North Ashrose
1031 Nyowee Poll Merino Stud
1032 Mulloorie
1033 Koehler E C & L N & Sons
1034 Tamaleuca
1035 Orrie Cowie

**THE ELDERS PRIZE
CHAMPION FINE WOOL AUGUST
SHORN POLL MERINO EWE**
Voucher (\$50) sponsored by **Elders Limited**

**RESERVE CHAMPION FINE WOOL
AUGUST SHORN POLL MERINO EWE**

Class 307 Fine wool ram, under 1 ½ years with no more than 2 teeth.

1036 NL Fiebig & Sons

Class 308 Fine wool ram, over 1 ½ years and under 2 ½ years with 4 teeth and over.

1037 North Ashrose
1038 Tamaleuca
1039 Tamaleuca
1040 Orrie Cowie
1041 Collinsville

**THE ELDERS PRIZE
CHAMPION FINE WOOL AUGUST
SHORN POLL MERINO RAM**
Voucher (\$50) sponsored by **Elders Limited**

**RESERVE CHAMPION FINE WOOL
AUGUST SHORN POLL MERINO RAM**

FIBRE MEAT PLUS

**Class 309 THE NUTRIEN LIVESTOCK
PRIZE Fibre Meat Plus Class
for Merino and Poll Merino
Rams - single entries only
For single entry March
regulation shorn rams**

showing no more than two permanent teeth at the time of the show.

Entries may come from general March Shorn classes

Entries in this class restricted to one entry per registered stud.

OBJECTIVES

1. To highlight the dual-purpose attributes of the South Australian Merino by combining live animal assessments for both Wool and Meat characteristics equally.

2. To identify the ram with the best combination of superior wool and carcase attributes.

GUIDELINES

Entrants to be assessed and scored by one Wool judge and one Carcase Conformation judge, in conjunction with current measurements derived from:

MERINO SHEEP CATALOGUE 2024

1. Body weight
 2. Eye muscle depth
 3. Fat depth
 4. Fibre Diameter
 5. Standard Deviation
 6. Comfort Factor
- SCORING POINTS**
- Visual.....50
 Carcase.....25
 Fleece.....25
TOTAL 100

\$2,500 sponsored by **Nutrien Livestock**

- | | |
|------|-----------------------------|
| 1042 | Roemahkita Poll Merino Stud |
| 1044 | IJ & FL Koch |
| 1045 | IJ & FL Koch |
| 1046 | North Ashrose |
| 1047 | Nyowee Poll Merino Stud |
| 1048 | Nyowee Poll Merino Stud |
| 1049 | Greenfields |
| 1050 | Terrick West |
| 1051 | Mulloorie |
| 1052 | Mulloorie |
| 1053 | Koehler E C & L N & Sons |
| 1054 | Carricowie |
| 1055 | Glendonald Merino Stud |
| 1056 | Glendonald Merino Stud |
| 1057 | Tamaleuca |
| 1058 | Tamaleuca |
| 1059 | Orrie Cowie |
| 1060 | Orrie Cowie |
| 1061 | Collinsville |
| 1062 | Wanganella Merino Stud |
| 1063 | Poll Bonoke |
| 1064 | Brimanna Poll Merino Stud |

Class 310 Fibre Meat Plus Class for Merino and Poll Merino Rams

For March regulation shorn rams showing no more than two permanent teeth at the time of the show.

Entries may come from general March Shorn classes

Entries restricted to **three entries per registered stud.**

OBJECTIVES

1. To highlight the dual-purpose attributes of the South Australian Merino by combining

live animal assessments for both Wool and Meat characteristics equally.

2. To identify the ram with the best combination of superior wool and carcase attributes.

GUIDELINES

Entrants to be assessed and scored by one Wool judge and one Carcase Conformation judge, in conjunction with current measurements derived from:

1. Body weight
 2. Eye muscle depth
 3. Fat depth
 4. Fibre Diameter
 5. Standard Deviation
 6. Comfort Factor
- SCORING POINTS**
- Visual.....50
 Carcase.....25
 Fleece.....25
TOTAL 100

- | | |
|------|------------------------------|
| 1065 | Roemahkita Poll Merino Stud |
| 1066 | Roemahkita Poll Merino Stud |
| 1067 | Roemahkita Poll Merino Stud |
| 1068 | Kamora Park Poll Merino Stud |
| 1069 | Kamora Park Poll Merino Stud |
| 1070 | Kamora Park Poll Merino Stud |
| 1071 | Terrick West |
| 1072 | Terrick West |
| 1073 | Terrick West |
| 1074 | PS & JH Meyer |
| 1075 | Greenfields Karalee |
| 1076 | Koehler E C & L N & Sons |
| 1077 | Glendonald Merino Stud |
| 1078 | Orrie Cowie |
| 1079 | Orrie Cowie |
| 1080 | Poll Bonoke |
| 1081 | Brimanna Poll Merino Stud |
| 1082 | Brimanna Poll Merino Stud |

THE NUTRIEN LIVESTOCK PRIZE STUD WITH THE HIGHEST AVERAGE SCORE

of either three Merino or three Poll Merino sheep entered in the above class.

\$1,000 sponsored by **Nutrien Livestock**

100% South Australian Owned & Operated

& proud of it!



fleuriemilkco.com.au

Fleurieu Milk Company



Proudly supporting
SA Dairy Farmers.

MERINO SHEEP CATALOGUE 2024

SCHOOL WETHER COMPETITION

Please refer to the 'Schools Merino Wethers Competition Handbook' for additional details regarding the competition and the preparation of Sheep.

Class 311 Pen of Three Wethers

To comprise three Merino or Poll Merino wethers under 1½ years of age with no more than two teeth.

The wethers must be shorn before, on or after 1st March of the current year, but at the time of inspection each wether will, allowing for natural growth shall not exceed the equivalent of 12.5mm as at 1st March.

All wethers to be tagged by AA Stud Breeders.

Wethers to be drawn from -

- 1) South Australian Studs
- 2) Merino or Poll Merino Breeders within the School Zone

- 3) Agriculture School's own flock

Exhibits will be weighed fat scored, eye muscled then shorn with micron, SD, CV, CF, yld and staple length so fleeces can be valued. The meat section will be valued on the day and price given per head.

Entry Fee \$50

First, Second, Third

1083	Urrbrae Agricultural High School
1084	Urrbrae Agricultural High School
1085	Jamestown Community School
1086	Jamestown Community School
1087	Waikerie High School
1088	Waikerie High School
1089	Murray Bridge High School
1090	Renmark High School
1091	Renmark High School
1092	Kangaroo Inn Area School
1093	Kangaroo Inn Area School
1094	Gawler and District College B-12

1095	Karoonda Area School
1096	Karoonda Area School
1097	Balaklava High School
1098	Balaklava High School
1099	Karcultaby Area School
1100	Karcultaby Area School
1101	Wudinna Area School
1102	Wudinna Area School
1103	Burra Community School
1104	Burra Community School
1105	Lameroo Regional Community School
1106	Keith Area School
1107	Keith Area School
1108	Coomandook Area School
1109	Coomandook Area School
1110	Lucindale Area School
1111	Lucindale Area School
1112	Faith Lutheran College
1113	Faith Lutheran College
1114	Mount Barker High School
1115	Mount Barker High School
1116	Eudunda Area School
1117	Eudunda Area School
1118	Kadina Memorial School
1119	Kadina Memorial School
1120	Scotch College
1121	Scotch College
1122	Westminster School
1123	Westminster School
1124	Orroroo Area School
1125	Tintinara Area School
1126	Tintinara Area School
1127	Meningie Area School
1128	Meningie Area School
1129	Gladstone High School
1130	Gladstone High School
1131	Nuriootpa High School
1132	Nuriootpa High School
1133	Unity College
1134	Birdwood High School
1135	Birdwood High School
1136	Bordertown High School
1137	Bordertown High School
1138	St Marks College Port Pirie
1139	St Marks College Port Pirie
1140	Unity College
1141	Riverton and District High School
1142	Riverton and District High School
1143	Kingston Community School
1144	Kingston Community School
1145	Kapunda High School
1146	Kapunda High School

MERINO SHEEP CATALOGUE 2024

1147	Trinity College Gawler
1148	Trinity College Gawler
1149	Naracoorte High School
1150	Naracoorte High School
1151	Eastern Fleurieu School
1152	Eastern Fleurieu School
1153	Penola High School
1154	Penola High School
1155	Clare High School
1156	Clare High School
1157	Willunga High School
1158	Willunga High School
1159	Oakbank Area School
1160	Oakbank Area School
1161	Cleve Area School
1162	Cleve Area School

THE SPENCE DIX & CO PRIZE BEST PEN OF THREE WETHERS

First: \$350, Second: \$250; Third: \$175
Fourth: \$125 Fifth: \$100
\$1,000 sponsored by **Spence Dix & Co**

THE AUSTRALIAN WOOL NETWORK PRIZE

THREE MOST VALUED FLEECES
First: \$350 Second: \$250 Third: \$175
Fourth: \$125 Fifth: \$100
\$1,000 sponsored by
Australian Wool Network

THE THOMAS FOODS INTERNATIONAL PRIZE

BEST MEAT VALUE
First: \$350 Second: \$250 Third: \$175
Fourth: \$125 Fifth: \$100
\$1,000 sponsored by
Thomas Foods International

THE URRBRAE PRIZE HIGHEST WEIGHT GAIN BY A GROUP

From the date of regulation tagging to the date of the School Wether competition at the Royal Adelaide Show.

First: \$100 Second: \$50 Third: \$25
\$175 sponsored by **Urrbrae Agricultural High School**

THE ATASA PRIZE MOST PROFESSIONAL SCHOOL SHOW TEAM

First: \$100 and Perpetual Trophy Second:
\$50 Third: \$25
\$175 sponsored by **Agriculture Teachers Association of SA**

THE ELDERS TRAINEE PROGRAM PRIZE THE SHOW TEAM DEVELOPMENT AWARD

A school must have participated in each of the previous 3 years to be eligible. The most improved school is the one who has demonstrated the strongest trend of improvement in the net value of both sheepmeat and fleece value combined over the previous three and current competitions. Schools entering more than one eligible exhibit in any year are allocated the average value of the 2 exhibits.

Voucher (\$500) sponsored by Elders Limited Voucher can be redeemed for farm supplies/products or for consultancy services with an Elders Livestock Production Advisor (e.g. 1/2-day education session or nutrition/feed plan)

THE JOHN ROTHWELL PERPETUAL SHIELD and THE MUTOOROO PASTORAL COMPANY PRIZE SUPREME SCHOOL MERINO WETHER EXHIBIT

Perpetual Trophy sponsored by the **RA&HS of SA**
\$900 and Trophy sponsored by
Mutooroo Pastoral Company



GREAT Food Lives HERE

www.foodlandsa.com.au

Marie, third generation Chapley family

MERINO SHEEP CATALOGUE 2024

Class 312 THE RABOBANK AWARD CLASS HANDLER AWARD

Recognising individual performance in sheep handling, presentation and conduct, the Class Handler awards will be presented to school students selected by an independent team. Finalists will be required to present a Merino wether before two Sheep Judges in the afternoon.

First: \$350, Voucher; Second: \$250; Third: \$175; Fourth: \$125; Fifth: \$100

PRIME SAMM

Sheep may not compete in more than one class except where otherwise specified. A Novice exhibitor is one who has not previously won a first prize at a Royal Show. Lambs at foot are allowed to be displayed in the show ring if exhibitor wishes. All sheep to be shorn within the month of March unless otherwise specified. All entries in Ram classes to be scanned.

RAM CLASSES

Class 313 Ram, over 1½ years.

**Class 314 THE WONNARA PRIME
SAMM PRIZE Ram, under 1½
years showing no more than
two teeth.**

\$50 sponsored by Wonnara
Prime SAMM Stud

1163 Galaxy Park
1164 Galaxy Park

**Class 315 Ram, under 1½ years
showing no more than two
teeth, shorn within 28 days of
showing.**

Class 316 Ram, showing milk teeth.

**Class 317 Pair of Rams, under 1½ years
showing no more than two
teeth.**

1165 Galaxy Park

CHAMPION PRIME SAMM RAM

**THE NULTY TROPHY
RESERVE CHAMPION PRIME SAMM RAM**
Trophy sponsored by **Punari Prime SAMM
Stud**

KUB power

**CONSTRUCTION & AGRICULTURAL
EQUIPMENT AND MACHINERY**

***** DISPLAY IN MAIN ARENA *****

WWW.KUBPOWER.COM | KUBPOWER@KUBPOWER.COM.AU

Adelaide 08 8139 7200
Summertown 08 8390 3017
Naracoorte 08 8762 0123



MERINO SHEEP CATALOGUE 2024

EWE CLASSES

- Class 320 THE CARLTON NITSCHKE INVESTMENTS P/L PRIZE Ewe, under 1½ years, showing no more than two teeth.**
First: Trophy sponsored by **Carlton Nitschke Investments Pty Ltd**
1166 Galaxy Park
- Class 321 Ewe, under 1½ years showing no more than two teeth shorn within 28 days of showing.**
- Class 322 Ewe, showing milk teeth.**
- Class 323 THE THOMAS PRIZE Pair of Ewes, under 1½ years showing no more than two teeth.**
\$50 sponsored by **G & L Thomas**
1167 Galaxy Park
- Class 324 Ewe Lamb, unshorn untrimmed born after 1 March of the current year.**

THE WILLIAM HAIG BROWN D.F.M MEMORIAL TROPHY CHAMPION PRIME SAMM EWE

Perpetual Trophy sponsored by **Megan Heddle, Jeancourt Stud**

RESERVE CHAMPION PRIME SAMM EWE

THE JON-DEL PRIME SAMM TROPHY SUPREME CHAMPION PRIME SAMM

Trophy sponsored by **Greg Tynan**

GROUP CLASSES

- Class 325 THE AUSTRALIAN WOOL NETWORK PRIZE Wool ram, any age, regulation shorn and drawn from the existing classes.**
(The winner will not be eligible for judging of the Champion Ram)
\$100 sponsored by **Australian Wool Network**
1168 Galaxy Park
1169 Galaxy Park
- Class 326 THE AUSTRALIAN WOOL NETWORK PRIZE Wool ewe, any age, regulation shorn and drawn from the existing classes.**
Drawn from the existing classes
(The winner will not be eligible for judging of the Champion Ewe)
\$100 sponsored by **Australian Wool Network**
1170 Galaxy Park
1171 Galaxy Park
- Class 327 THE ELDERS PRIZE Breeders Group, one ram, two ewes.**
Animals to be drawn from general classes.
Voucher (\$100) sponsored by **Elders Limited**
1172 Galaxy Park

MERINO SHEEP CATALOGUE 2024

Class 328 THE STOCK JOURNAL PUBLISHERS PRIZE Sires Progeny Group.

To comprise three sheep under 1½ years.

To be sired by one nominated sire, both sexes not necessarily represented. Can be any wool length combination. Bred by the exhibitor. Animals to be drawn from general classes.

\$100 sponsored by **Stock Journal Publishers Pty Ltd**

1173 Galaxy Park

THE PRESIDENT'S AWARD MOST SUCCESSFUL PRIME SAMM NOVICE EXHIBITOR

\$100 sponsored by **Prime SAMM Breeders Society of SA**

THE GEORGE WOOLFORD MEMORIAL TROPHY and THE NUTRIEN LIVESTOCK PRIZE and THE STOCK JOURNAL PUBLISHERS PRIZE

for MOST SUCCESSFUL PRIME SAMM EXHIBITOR

\$50 sponsored by **Nutrien Livestock**

\$100 sponsored by **Stock Journal**

Publishers Pty Ltd

Perpetual Trophy sponsored by **The Stock Journal** and **Prime SAMM Breeders Society of SA**

PRIME SAMM RAM YOUNG JUDGES COMPETITION

To be held on Thursday, 5 September.

IT COSTS NOTHING TO COMPARE

We're on YOUR side:

- We listen to what you need
- Explain your best cover options
- Negotiate covers on your behalf
- Claim settlement negotiations

MGA gives you the power of choice



Contact us
today to
compare
**Crop,
Farm,
Business,
Tradies,**
+ many more

MGA Offices
Australia Wide

www.mga.com

MGA Insurance Brokers Pty Ltd
ABN 29 008 096 277 AFSL: 244601

MGA
INSURANCE GROUP

STANDING BY YOU

MERINO SHEEP CATALOGUE 2024

Thanks to our 2024 Merino Sheep Competition Sponsors

All Phase Electrical
Australian Wool Network
Carlton Nitschke Investments Pty Ltd
Elders Elanco
Elders Rural Services
Fresh Photo Image
Greg Tynan
Magnus Australia Pty Ltd
MC Ashby & Co
MGA Insurance Group
Mutooroo Pastoral Company
NL Fiebig & Sons
Nutrien Ag Solutions
Prime SAMM Breeders Society of SA
Punari Prime SAMM Stud
Rabobank Australia Limited
Rural Bank
SA Stud Merino Sheepbreeders' Association
Stock Journal Publishers Pty Ltd
Ted Lehmann
Thomas Foods International
Urrbrae Agricultural High School
Virginia Hawker
White River Merino Stud
Wonnara Prime SAMM Stud

GOING FURTHER FOR STUD STOCK

Nutrien Ag Solutions has the specialised knowledge and resources to take your livestock business further.

Visit your local branch today or discover more online at NutrienAgSolutions.com.au/Livestock

Gordon Wood 0408 813 215

Richard Miller 0428 849 327

Andrew Wilson 0439 354 228

MERINO SHEEP CATALOGUE 2024

MERINO AND POLL MERINO - GROUP CLASSES

Belbourie Merino and Poll Merino, 62 Belbourie Road, MARNOO, VIC, 3387
Brimanna Poll Merino Stud, 310 Harris Road, YEELANNA, SA, 5632
Collinsville, PO Box 48, HALLETT, SA, 5419
Glendonald Merino Stud, 431 L Bones Road, NHILL, VIC, 3418
Greenfields Karalee, PO Box 17, BOOBOROWIE, SA, 5417
Kamora Park Poll Merino Stud, Kamora Park Poll Merino Stud, PO Box 165, KAROONDA, SA, 5307
Koehler E C & L N & Sons, 170 Martin Road, MURRAY BRIDGE, SA, 5253
Mulloorie, PO Box 45, BRINKWORTH, SA, 5464
North Ashrose, P0 Box 60, GULNARE, SA, 5471
Nyowee Poll Merino Stud, PO Box 132, BALAKLAVA, SA, 5461
Orrie Cowie, 431 L Bones Road, NHILL, VIC, 3418
Poll Bonoke, Boonoke, Conargo Road, DENILIKUIN, NSW, 2710
Tamaleuca, 377 Clark Road, OUYEN, VIC, 3490
Terrick West, 2400 Echuca - Serpentine Road, PRAIRIE, VIC, 3572

MERINO MARCH SHORN

Collinsville, PO Box 48, HALLETT, SA, 5419
Glendonald Merino Stud, 431 L Bones Road, NHILL, VIC, 3418
Greenfields, PMB 30, HALLETT, SA, 5419
Mulloorie, PO Box 45, BRINKWORTH, SA, 5464
North Ashrose, P0 Box 60, GULNARE, SA, 5471
Orrie Cowie, 431 L Bones Road, NHILL, VIC, 3418

MERINO AUGUST SHORN

Collinsville, PO Box 48, HALLETT, SA, 5419
Glendonald Merino Stud, 431 L Bones Road, NHILL, VIC, 3418
Greenfields, PMB 30, HALLETT, SA, 5419
Koehler E C & L N & Sons, 170 Martin Road, MURRAY BRIDGE, SA, 5253
Mulloorie, PO Box 45, BRINKWORTH, SA, 5464
NL Fiebig & Sons, PO Box 154, KEITH, SA, 5267
Orrie Cowie, 431 L Bones Road, NHILL, VIC, 3418

POLL MERINO MARCH SHORN

Belbourie Merino and Poll Merino, 62 Belbourie Road, MARNOO, VIC, 3387
Brimanna Poll Merino Stud, 310 Harris Road, YEELANNA, SA, 5632
Callowie Poll Merino, PO Box 538, BORDERTOWN, SA, 5268
Carcuma North, Carcuma North, 613 Netherton Road, PEAKE, SA, 5301
Carricowie, Brentwood, VIA MINLATON, SA, 5575
Collinsville, PO Box 48, HALLETT, SA, 5419
Flairdale Poll Merinos, PO Box 323, TALEM BEND, SA, 5260
Glendonald Merino Stud, 431 L Bones Road, NHILL, VIC, 3418
Greenfields, PMB 30, HALLETT, SA, 5419
Greenfields Karalee, PO Box 17, BOOBOROWIE, SA, 5417
Kamora Park Poll Merino Stud, Kamora Park Poll Merino Stud, PO Box 165, KAROONDA, SA, 5307
Koehler E C & L N & Sons, 170 Martin Road, MURRAY BRIDGE, SA, 5253
Mulloorie, PO Box 45, BRINKWORTH, SA, 5464
North Ashrose, P0 Box 60, GULNARE, SA, 5471
Nyowee Poll Merino Stud, PO Box 132, BALAKLAVA, SA, 5461
Orrie Cowie, 431 L Bones Road, NHILL, VIC, 3418
Poll Bonoke, Boonoke, Conargo Road, DENILIKUIN, NSW, 2710

MERINO SHEEP CATALOGUE 2024

Tamaleuca, 377 Clark Road, OUYEN, VIC, 3490
Terrick West, 2400 Echuca - Serpentine Road, PRAIRIE, VIC, 3572

POLL MERINO AUGUST SHORN

Collinsville, PO Box 48, HALLETT, SA, 5419
Greenfields, PMB 30, HALLETT, SA, 5419
Koehler E C & L N & Sons, 170 Martin Road, MURRAY BRIDGE, SA, 5253
Mulloorie, PO Box 45, BRINKWORTH, SA, 5464
NL Fiebig & Sons, PO Box 154, KEITH, SA, 5267
North Ashrose, PO Box 60, GULNARE, SA, 5471
Nyowee Poll Merino Stud, PO Box 132, BALAKLAVA, SA, 5461
Orrie Cowie, 431 L Bones Road, NHILL, VIC, 3418
Tamaleuca, 377 Clark Road, OUYEN, VIC, 3490

FIBRE MEAT PLUS

Brimanna Poll Merino Stud, 310 Harris Road, YEELANNA, SA, 5632
Callowie Poll Merino, PO Box 538, BORDERTOWN, SA, 5268
Carricowie, Brentwood, VIA MINLATON, SA, 5575
Collinsville, PO Box 48, HALLETT, SA, 5419
Glendonald Merino Stud, 431 L Bones Road, NHILL, VIC, 3418
Greenfields, PMB 30, HALLETT, SA, 5419
Greenfields Karalee, PO Box 17, BOOBOROWIE, SA, 5417
Kamora Park Poll Merino Stud, Kamora Park Poll Merino Stud, PO Box 165, KAROONDA, SA, 5307
Koehler E C & L N & Sons, 170 Martin Road, MURRAY BRIDGE, SA, 5253
Mulloorie, PO Box 45, BRINKWORTH, SA, 5464
North Ashrose, PO Box 60, GULNARE, SA, 5471
Nyowee Poll Merino Stud, PO Box 132, BALAKLAVA, SA, 5461
Orrie Cowie, 431 L Bones Road, NHILL, VIC, 3418
Poll Bonoke, Boonoke, Conargo Road, DENILQUIN, NSW, 2710
PS & JH Meyer, PO Box 45, BRINKWORTH, SA, 5464
Roemahkita Poll Merino Stud, PO Box 15, CUMMINS, SA, 5631
Tamaleuca, 377 Clark Road, OUYEN, VIC, 3490
Terrick West, 2400 Echuca - Serpentine Road, PRAIRIE, VIC, 3572

SCHOOL WETHER COMPETITION

Balaklava High School, PO Box 41, BALAKLAVA, SA, 5461
Birdwood High School, Shannon Street, BIRDWOOD, SA, 5234
Bordertown High School, PO Box 191, BORDERTOWN, SA, 5268
Burra Community School, 7 Bridge Terrace, BURRA, SA, 5417
Cleve Area School, Second Street, CLEVE, SA, 5640
Faith Lutheran College, PO Box 296, TANUNDA, SA, 5352
Gawler and District College B-12, Barnet Road, EVANSTON, SA, 5116
Gladstone High School, 16233 Horrocks Hwy, GLADSTONE, SA, 5473
Jamestown Community School, 1 Humphris Terrace, JAMESTOWN, SA, 5491
Kadina Memorial School, 5 Doswell Terrace, KADINA, SA, 5554
Kangaroo Inn Area School, 2329 Beachport Penola Road, KANGAROO INN, SA, 5280
Kapunda High School, PO Box 296, KAPUNDA, SA, 5373
Karcultaby Area School, PMB 9, Via Minnipa, MINNIPA, SA, 5654
Karoonda Area School, 1 North Terrace, KAROONDA, SA, 5307
Keith Area School, Tolmer Terrace, KEITH, SA, 5267
Kingston Community School, 46 East Terrace, KINGSTON SE, SA, 5275
Lameroo Regional Community School, 1 Bews Terrace, LAMEROO, SA, 5302

MERINO SHEEP CATALOGUE 2024

Lucindale Area School, PO Box 147, LUCINDALE, SA, 5272
Mount Barker High School, 2 Wellington Road, MOUNT BARKER, SA, 5251
Murray Bridge High School, 5 Lohmann Street, MURRAY BRIDGE, SA, 5253
Naracoorte High School, Stewart Terrace, NARACOORTE, SA, 5271
Nuriootpa High School, PO Box 13, NURIOOTPA, SA, 5355
Oakbank Area School, 156 Onkaparinga Road, OAKBANK, SA, 5243
Ororoo Area School, West Terrace, ORROROO, SA, 5431
Penola High School, 43 Cameron Street, PENOLA, SA, 5277
Renmark High School, Thurk Street, RENMARK, SA, 5341
Riverton and District High School, Oxford Terrace, RIVERTON, SA, 5412
Scotch College, Carruth Road, TORRENS PARK, SA, 5062
St Marks College Port Pirie, PO Box 796, PORT PIRIE, SA, 5540
Trinity College Gawler, Alexander Avenue, EVANSTON PARK, SA, 5116
Unity College, 61 Owl Drive, MURRAY BRIDGE, SA, 5253
Urrbrae Agricultural High School, 505 Fullarton Road, NETHERBY, SA, 5062
Waikerie High School, 24 Blake Road, WAIKERIE, SA, 5332
Westminster School, 1-23 Allison Avenue, MARION, SA, 5043
Willunga High School, 239 Main Road, WILLUNGA, SA, 5172
Wudinna Area School, 21 Medley Terrace, WUDINNA, SA, 5652
PRIME SAMM
Galaxy Park, PO Box 214, TINTINARA, SA, 5266



We love what we do

REMONDIS supports 24,000 commercial and industrial customers with waste collection, processing, recycling and disposal solutions, right across Australia. Here in South Australia, our team of passionate locals loves partnering with the Royal Adelaide Show – proudly providing an essential service for this great event, year after year.

13 73 73
remondis-australia.com.au

REMONDIS®
WORKING FOR THE FUTURE

RYDGES

SOUTH PARK ADELAIDE

SCAA SHEARER WOOLHANDLER TRAINING Inc. RTO ID 4577



James Braxall Photography

LEADING PROVIDER OF
NATIONALLY ACCREDITED
TRAINING FOR THE WOOL
INDUSTRY

**INSHED TRAINING
SA, VIC & TAS**



Ph 1300 787 984 www.swti.edu.au



Stock Journal

Come and see us
near the cattle arena

Livestock Sales

Luke Bowden

0476 818 814

Editor

Elizabeth Anderson

0455 082 507



www.stockjournal.com.au

f facebook.com/stockjournal

@ [Instagram @stockjournal](https://instagram.com/stockjournal)

VILLI'S

Family Bakery



EST. 1968

Pioneers of Quality



We'll be right
BY YOUR SIDE
season after season

With 125 years of global agricultural history, Rabobank has a unique understanding of the industry and the importance of taking a longer term view.



RAB001762

Call your local team on
1300 30 30 33 to find out more

Rabobank



Proudly promoting and supporting education in all fields of agriculture and horticulture

For more information visit
showsocietyfoundation.com.au



Show Society
FOUNDATION