

# Art Prize



**ROYAL  
ADELAIDE  
SHOW** Presented by  
**Drakes**

**2026 Competitions now open**  
[theshow.com.au/competitions](https://theshow.com.au/competitions)

DRAKES SUPERMARKETS  
EST. 1974

**ROYAL  
ADELAIDE  
SHOW**



Presented by  
**Drakes.**

# Thank you to our sponsors...

Adelaide Art Society

Art to Art

City of Unley

Frame Works Plus Gifts

ProLab Imaging

Royal South Australian Society for Arts

South Australian Watercolour Society

# Contents

2026 KEY DATES .....	2
EXHIBITION HOURS .....	2
HOW TO ENTER.....	2
ENTRY FEES (GST INCLUDED) .....	2
SUBMISSION OF ENTRIES .....	2
JUDGING.....	2
CLOSING DATE OF ENTRIES .....	2
MEMBERSHIP .....	2
WITHDRAWALS .....	2
REFUNDS .....	3
TRANSFERS.....	3
EXHIBIT CARDS .....	3
DELIVERY .....	3
COLLECTION OF SOLD EXHIBITS BY PURCHASER .....	3
COLLECTION OF UNSOLD EXHIBITS BY EXHIBITORS.....	3
ATTENTION EXHIBITORS – SELECTION OF ARTWORK.....	3
CONTACT US.....	3
YOUR PRIVACY .....	4
AWARDS.....	4
PAYMENT OF PRIZE MONEY.....	4
EXHIBITS FOR SALE.....	4
SOCIETY’S LIABILITY.....	5
INSURANCE .....	5
GENERAL CONDITIONS.....	5
ART PRIZE CLASSES.....	6
SPECIAL AWARDS .....	7

Acknowledgment of cover artwork: **Natasha Blieschke**

## 2026 KEY DATES

<b>Entries Close:</b>	Friday 10th July 2026
<b>Deliveries:</b>	Adelaide Showground Monday 31st August, strictly between 9.00 am to 12 noon.
<b>Judging:</b>	Thursday 3rd September
<b>Awards Announced Online:</b>	Friday 4th September
<b>Collection:</b>	Tuesday 15th September, strictly between 9.00 am to 12.00 noon

## EXHIBITION HOURS

The Exhibition will be open for public viewing at the 2026 Royal Adelaide Show from Saturday 5th September to Sunday 13th September, in the Goyder Pavilion.

## HOW TO ENTER

### ENTRY FEES (GST INCLUDED)

Entry fee for each entry: \$28.15  
Exhibits must be submitted and paid for by the closing date.  
Entries will be acknowledged via email.

### SUBMISSION OF ENTRIES

**All entries must be submitted online [www.theshow.com.au](http://www.theshow.com.au)**

Exhibitors are limited to a maximum of three entries overall.

Please Note: All three pieces of artwork from one exhibitor MAY NOT be hung if hanging space is limited!

**It is a requirement of entry for this competition that all art work will be for sale.**

**Judges and Stewards of the Art Prize competition will be able to enter and display their artwork within the exhibition. Officials artwork will be ineligible for judging and awards.**

### JUDGING

All exhibits will be judged in the order best considered by the Judges.

All exhibitors shall accept the final decision of the Society and Judges.

The Judges shall have the power to disqualify or dismiss as being not eligible for judging any exhibit which, in his/her opinion does not comply with the regulations in every respect and such disqualification shall be accepted as final.

**\*\* Please note. One (1) piece of artwork can not be entered into two classes. \*\***

### CLOSING DATE OF ENTRIES

**Friday 10th July 2026**

T&Cs The following conditions will strictly apply:

- All online entries must be paid in full by 5.00 pm (ACST) on Friday 10th July 2026.
- Entry forms by facsimile, post or email will not be accepted.
- No exceptions to the above conditions will be made to any exhibitor under any circumstance.

### MEMBERSHIP

It is not a requirement of entry to the Royal Adelaide Art Prize Competition to be a member of the Royal Agricultural & Horticultural Society of SA Inc.

We do ask you however, to consider becoming a member of the Society, which will greatly assist us in continuing to grow, promote and support South Australia's vital Primary Industries. There are numerous other benefits to membership, including unlimited entry to The Royal Adelaide Show, access to Members Dining and Bar facilities and even discounts for Taste of the Best and The Adelaide Showground Caravan Park.

Further information can be found at <https://www.rahs.com.au/membership>

### WITHDRAWALS

All withdrawals must be made in writing and can be sent via email to [entries@adelaideshowground.com.au](mailto:entries@adelaideshowground.com.au)

Withdrawals must include class number/s and exhibit name (if applicable). Please note a refund will not apply if entries have closed.

## REFUNDS

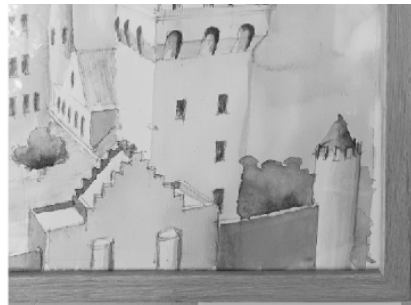
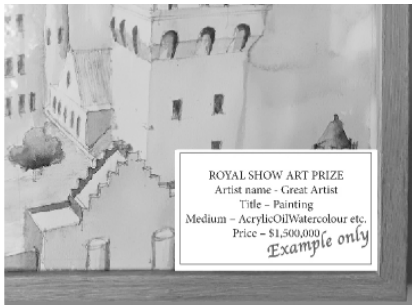
No refund of entry fees will be made after the closing date of entries.

## TRANSFERS

Exhibitors are requested to ensure paintings are entered in the correct class. Incorrect entries will not be transferred and will automatically be rejected.

## EXHIBIT CARDS

A List of Entries will be EMAILED to all exhibitors along with delivery details and dates. List of entry and full exhibitor details need to be provided upon delivery of artwork at this time stewards will match and adhere 'Exhibit Cards' to each exhibit.



Please attach your artwork tags so they can be seen from the front as in these examples whether framed or unframed artworks.

## DELIVERY

Monday 31st August, strictly between 9.00 am to 12 noon.

Exhibits must be delivered to Adelaide Showground, Goyder Pavilion, Wayville (enter via Goyder Forecourt) on the above date and times. Late exhibits will not be accepted. All exhibits will remain the custody of the Society from delivery until removal. The Society does not accept liability for any loss or damage suffered to an exhibit during this time.

## COLLECTION OF SOLD EXHIBITS BY PURCHASER

Tuesday 15th September, strictly between 9.00 am to 12.00 noon

All sold exhibits will be available for collection by Purchasers on the above date and times from the Goyder Pavilion, Adelaide Showground, Wayville.

## COLLECTION OF UNSOLD EXHIBITS BY EXHIBITORS

Tuesday 15th September, strictly between 9.00 am to 12.00 noon

All unsold exhibits will be available for collection by Exhibitor on the above date and times from the Goyder Pavilion, Adelaide Showground, Wayville.

Any exhibits not collected will have up until Friday 25th September 2026 to collect, after this date exhibits will be destroyed unless prior arrangement is made.

## ATTENTION EXHIBITORS – SELECTION OF ARTWORK

Due to the limited hanging space available, all entries may not be hung.

All entries will be viewed by a Selection Committee, who will advise the RA&HS as to which entries will be excluded. Entry fees for those works not displayed will not be returned.

## CONTACT US

Email: [entries@adelaideshowground.com.au](mailto:entries@adelaideshowground.com.au)

Phone: (08) 8210 5211 Between 9.00 am – 5.00 pm Monday to Friday

Website: [www.theshow.com.au](http://www.theshow.com.au)

Phone: (08) 8210 5211 Between 9:00 am - 5.00 pm Monday to Friday

The Royal Agricultural & Horticultural Society's ABN is 68 531 710 498.

## YOUR PRIVACY

By exhibiting at The Show you acknowledge that you have read and agreed to the privacy policy of the RA&HS which can be viewed here [linked to <https://www.theshow.com.au/contact-us/> ].

In relation to your entry into a competition we may specifically use and/or disclose your personal information to:

- Communicate competition information to you such as entry opening dates, delivery and collection details and entry ticket distribution
- Publish competition results both online and in printed results listings
- Publish competition entries in Competition Catalogues
- Advise sponsors of competition prize winners for distribution of prizes from both the RA&HS and sponsors

By entering into a competition you consent to your contact details being provided to the sponsors of that competition for the purpose of distributing your prize. You also consent to your name, suburb and postcode being listed in a competition catalogue and, if you are a prize winner your name in competition results.

If you do not wish for your name and address to be printed in a competition catalogue, please ensure that you select the 'Keep Private' option in your online exhibitor profile.

## AWARDS

RA&HS sashes will be awarded to all major award winners.

Ribbons will be awarded for 1st, 2nd and 3rd place;

Classes with 10-15 exhibits, 1 Commended Ribbon and over 16 exhibits, 2 Commended Ribbons.

Exhibitors agree that only the specific art that received the award can have any reference to that award.

## PAYMENT OF PRIZE MONEY

Any prize money won during the Royal Adelaide Show is paid by Electronic Funds Transfer (EFT). The Exhibitor should provide the BSB, Account Number and Account Name when entering.

**PRIZE MONEY WILL BE PAID BY THE END OF OCTOBER.**

### PRIZE MONEY AND GST

Prize money as stated in the Prize Schedule does not include GST.

The prize money which we pay to successful exhibitors depends on information provided to us. If you confirm that you are GST registered and provide your Australian Business Number (ABN), we will pay the appropriate prize money plus 10% GST. We will provide you with a Recipient Created Tax Invoice which you will need to submit to the Australian Taxation Office.

If you confirm you are registered for GST, in entering the competition, you acknowledge your agreement to the following:

- You will not issue a tax invoice to the RA&HS in respect to prize money received;
- You will notify the RA&HS if you cease to be registered for GST.

If you provide your Australian Business Number but are not registered for GST, we will pay the prize money as detailed in the Competition Schedule without reference to the GST.

If you confirm you are entering as part of a private recreational pursuit or hobby, we will pay the prize money as detailed in the Competition Schedule without reference to GST.

### IMPORTANT

It is important that you either:

- Confirm you are entering as part of a private recreational pursuit or hobby, or
- Confirm you are entering as a GST registered business and supply your ABN

Failure to do either of the above will require the RA&HS to withhold tax, at the maximum tax rate, from your prize money in accordance with Australian tax legislation. The RA&HS is not a tax consultant and therefore assumes no liability for actions taken as a result of these guidelines. In any instances where an entrant or sponsor is uncertain of the tax implications of their involvement, they should consult their own accountant or tax advisor.

The Society makes every endeavor to ensure all prizes listed are accurate at the time of publishing. Should a cash prize be withdrawn by a sponsor subsequent to publishing, the prize will revert back to the competitions default amount where applicable. Vouchers, product or trophies withdrawn by a sponsor subsequent to publishing will not be replaced. It is the responsibility of the prize winner to follow-up with the Society any sponsored prize (cash, voucher, product, trophy) they believe they are entitled to prior to 30 November in the year of the prize being awarded. The Society will not follow-up prize sponsors after this date or review any prizes that may have been incorrect.

## EXHIBITS FOR SALE

The Society will encourage sales of work while the Exhibition is in progress. A commission of 25% of price plus GST will be charged by the Society for works sold during the Exhibition. Artwork sold during the Royal Adelaide Show will be paid by EFT (Electronic Funds Transfer) by the end of October.

All hung exhibits will be for sale.

## SOCIETY'S LIABILITY

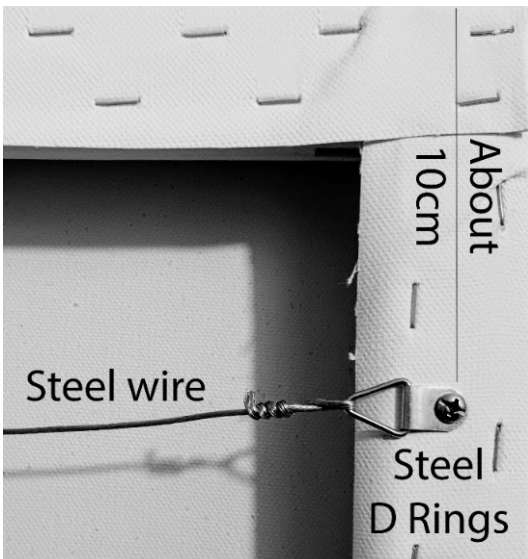
The Society shall be under no liability for any loss or damage suffered by an Exhibitor in respect of any property exhibited, whether caused by or attributable to the negligence of the Society or any of its servants or agents or otherwise howsoever.

## INSURANCE

The Society shall be under no liability for any loss or damage suffered by an Exhibitor in respect of any property exhibited, whether caused by or attributable to the negligence of the Society or any of its servants or agents or otherwise howsoever.

## GENERAL CONDITIONS

1. All paintings and drawings must have secure wire across the back for hanging purposes. All exhibitors must have "D" rings attached to the back of their frames. "D" rings must be placed no further than 30 cm from the top of the frame. (See below diagram) Exhibits with incorrect hanging fixtures will not be hung.
2. Artwork must not exceed the complete size including frame of 100 cm x 100 cm (3 ft 3" x 3 ft 3") and weighing no more than 5 kgs.
3. All work must be the bona fide work of the Exhibitor. All exhibits must be the original work of the person and must have been completed within two years prior to September of the current year. Copies of photographs from periodicals, magazines, Art Instruction Books or other Artist's work, prints and paper tole will not be accepted.
4. Diptych and triptych paintings must not be priced individually and must be entered in the same class.
5. The Society may allow reproduction images of selected works to the media during and prior to the period of the Exhibition.
6. The Society will encourage sales of work while the Exhibition is in progress. A commission of 25% of price plus GST will be charged by the Society for works sold during the Exhibition.
7. The exhibition is open to artists 16 years and over as at 1 January of the current year.
8. Works that have been entered in the Royal Adelaide Show exhibition previously, are not eligible.



D Ring Attachment Example

# ART PRIZE CLASSES

- Class 1 THE ART TO ART PRIZE**  
**Landscape/Seascape**  
On any surface, any subject, any media  
**First** : Voucher (\$200) sponsored by **Art to Art**
- Class 2 THE ART TO ART PRIZE**  
**Still Life, on any surface, any subject, any media**  
**First** : Voucher (\$200) sponsored by **Art to Art**
- Class 3 THE FRAMEWORKS PLUS GIFTS PRIZE**  
**Oil, on any surface, any subject**  
**First** : Voucher (\$200) sponsored by **Frame Works Plus Gifts**
- Class 4 THE SA WATERCOLOUR SOCIETY PRIZE**  
**Water Colour, on any surface, any subject**  
**First** : \$125; **Second** : \$75; **Third** : \$50  
\$250 sponsored by **South Australian Watercolour Society**
- Class 5 THE FRAMEWORKS PLUS GIFTS PRIZE**  
**Acrylic, on any surface, any subject**  
**First** : Voucher (\$200) sponsored by **Frame Works Plus Gifts**
- Class 6 THE FRAMEWORKS PLUS GIFTS PRIZE**  
**Mixed Media & Textile, on any surface, any subject**  
**First** : Voucher (\$200) sponsored by **Frame Works Plus Gifts**
- Class 7 THE FRAMEWORKS PLUS GIFTS PRIZE**  
**Special Needs, any media, any subject. Works by an artist with a disability**  
**First** : Voucher (\$200) sponsored by **Frame Works Plus Gifts**
- Class 8 THE FRAMEWORKS PLUS GIFTS PRIZE**  
**Pastels, on any surface, any subject**  
**First** : Voucher (\$200) sponsored by **Frame Works Plus Gifts**
- Class 9 THE FRAMEWORKS PLUS GIFTS PRIZE**  
**Works on Paper: prints, pen, ink, conte, graphite or charcoal, any subject**  
**First** : Voucher (\$200) sponsored by **Frame Works Plus Gifts**
- Class 10 THE ART TO ART PRIZE**  
**Portrait, on any surface, any media**  
**First** : Voucher (\$200) sponsored by **Art to Art**
- Class 11 THE FRAMEWORKS PLUS GIFTS PRIZE**  
**Digital Art, on any surface, any subject**  
**First** : Voucher (\$200) sponsored by **Frame Works Plus Gifts**

# SPECIAL AWARDS

## **THE FRAME WORKS PLUS GIFTS PRIZE**

### **LANDSCAPE/SEASCAPE - MERIT PRIZE**

The judges will select a Landscape/Seascape exhibit that, in their opinion, displays potential and hasn't won 1st in any class.  
Voucher (\$200) sponsored by **Frame Works Plus Gifts**

## **THE SA WATERCOLOUR SOCIETY PRIZE**

### **WATER COLOUR - ENCOURAGEMENT PRIZE**

The judges will select a watercolour exhibit that, in their opinion, displays potential and hasn't won 1st place in any class.  
\$50 sponsored by **South Australian Watercolour Society**

## **THE PROLAB IMAGING PRIZE**

### **THE KYM BONYTHON ENCOURAGEMENT AWARD FOR ARTISTS AGED 18 TO 30**

The judges will select the exhibit that, in their opinion, achieves the best expression of creativity using any media.  
The subject matter should portray the fun, happiness and enjoyment of a day at the Show.  
Voucher (\$500) sponsored by **ProLab Imaging**

## **THE CITY OF UNLEY PRIZE**

### **STUDIES OF URBAN LIFE**

Capturing the characteristics of city life and human interaction in metropolitan areas.  
\$500 sponsored by **City of Unley**

## **THE ADELAIDE ART SOCIETY PRIZE**

### **OPEN ENCOURAGEMENT PRIZE**

The judges will select an exhibit that in their opinion displays potential.  
\$300 sponsored by **Adelaide Art Society**

## **THE CITY OF UNLEY PRIZE and**

### **THE ROYAL SOUTH AUSTRALIAN SOCIETY FOR ARTS PRIZE**

#### **THE GOYDER BEST EXHIBIT IN SHOW**

\$500 sponsored by **Royal South Australian Society for Arts**  
\$300 sponsored by **City of Unley**

# ROYAL ADELAIDE SHOW Presented by



# Drakes.

## 2026 Competitions

[theshow.com.au](http://theshow.com.au)